

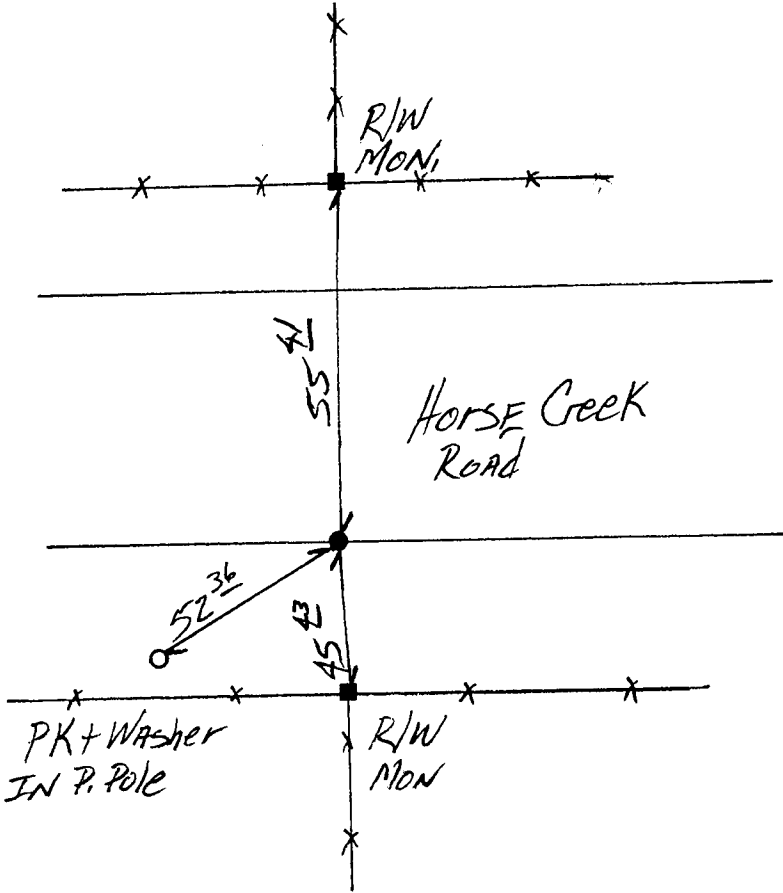
State of Wyoming Corner Record

(in compliance with the CORNER PERPETUATION AND FILING ACT, Wyoming Statutes, 1977, Section 36-11-101, et. seq., and the Rules and Regulations of the Board of Registration for Professional Engineers and Professional Land Surveyors)

Reverse side of this form may be used if more space is needed.

Record of original survey and citation of source of historical information (if corner is lost or obliterated). Description of corner monumentation evidence found and/or monument and accessories established to perpetuate the location of this corner. Sketch of relative location of monument, accessories, and reference points with course and distance to adjacent corner(s) (if determined in this survey). Method and rationale for reestablishment of lost or obliterated corner.

*FOUND AND REPLACED SPIKE, per Forms by LS 519 AND LS 495
Set 3/4" AL. CAP ON 3/4" REBAR*



1994 NOV 21 AM 9:03

LARAMIE COUNTY CLERK
COURT CLERK

154078

SSS
R67W
S33 | S34 T15N
S4 | S3 T14N

1994
PLS 5910

Date of Field Work: 7/94

Office Reference: 94122

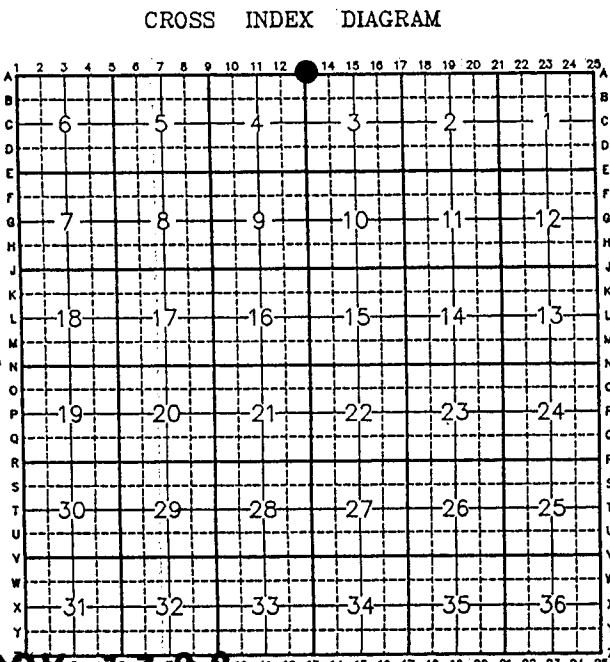
Firm/Agency, Address

STEIL SURVEYING SERVICES
1102 WEST 19th STREET
CHEYENNE WY 82001

Telephone Number: (307) 634-7273

This corner record was prepared by me or under my direction and supervision.

SEAL & SIGNATURE



BOOK T 388

0352

Corner Name: Section Section: 4 | 3 T 14 R 67 ; 6th P.M. Cross-Index No.: A-13